



Field Bulletin

- *FG00210 Cashbox Cleaning Procedures*
- SC, SCM, and SCL cashboxes

Bulletin #:	FG00210
Bulletin Date:	March 15, 2010
Subject:	<i>Cashbox Cleaning Procedures</i>
Affected Model(s):	SC, SCM, and SCL cashboxes

Purpose:

The purpose of this bulletin is to announce options for cleaning the MEI CASHFLOW SC cashbox.

Details:

The MEI CASHFLOW SC was launched in 2002 equipped with the industry's first "fit-for-purpose" cashbox that was reliable, durable and easier to use. MEI enhanced the design in 2006 to lengthen service life even in operating environments susceptible to dust ingress. Enhancements to cashbox optics, and accompanying software changes, were made with a goal of eliminating the need to clean individual cashbox components.

MEI's 2009 change from screws to rivets – to secure the cashbox pusher assembly – has led to questions about properly maintaining CASHFLOW SC performance. MEI believes cashboxes manufactured after 2006 shouldn't be as susceptible to conditions that would necessitate removing the cashbox pusher assembly and cleaning optics. But, given the durability of the CASHFLOW SC, there are a large number of units produced prior to that change still in the field.

To determine the age of a CASHFLOW SC unit please refer to the serial number of the unit. The 1st and 2nd digit of the serial number represents the week the cashbox was manufactured. The 3rd digit of the serial number represents the year the cashbox was manufactured.

Clearly, there is a wide variance of environments in which CASHFLOW SC operates. Applications that operate in extreme environments have historically cleaned cashboxes when they can be removed from service. The need was necessitated by: 1) reduced capacity, 2) dirty optics, and 3) "greening", or upgrading, in-service equipment. Although the need should be lessened with the 2006 update, operators that want to continue to clean cashboxes will have several options:

- A small ultrasonic cleaner (BT90), which will hold 2-3 SCLs or 4-5 SCs.
- A larger ultrasonic cleaner (BT130), which will hold 3-4 SCLs or 5-6 SCs.
- A commercial dishwasher, in which quantities will vary.

MEI has tested these solutions internally and externally. And, in each case, the cleaned CASHFLOW SC units met all product specifications and were fit to go back in the field and meet stringent performance expectations.

As always, MEI looks forward to working with its customers to develop efficient maintenance processes that maximize the investment in MEI products. There is not a one-size-fits-all solution. Individual solutions will vary by customer – and MEI will help each OEM determine the most efficient path forward (including equipment recommendations) given volume and application.

Action:

Option A Ultrasonic Power Corp. Model BT90 or BT130 ultrasonic cleaner

Steps:

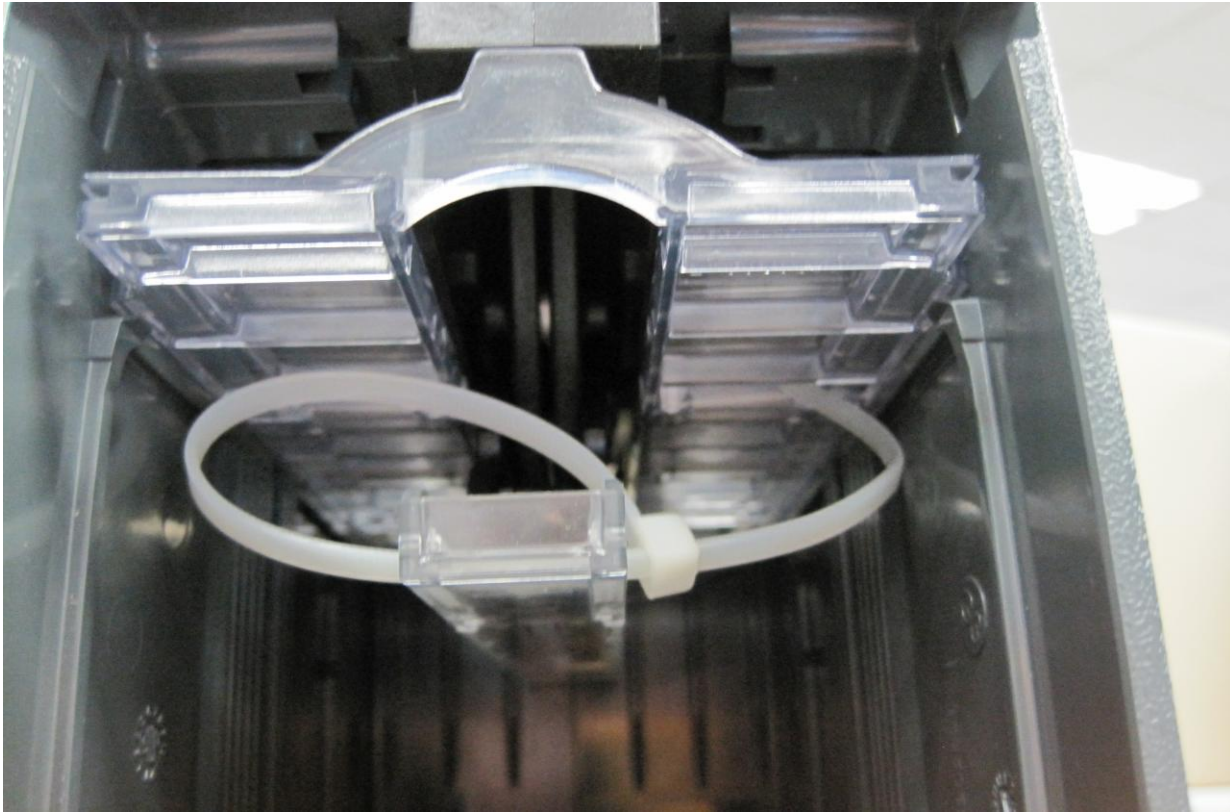
1. Remove the lock(s) from the cashbox(es).
2. Open cashbox door(s).
3. Refer to the Model BT90 or BT130 users manual. Set frequency to mid-range with water temperature 100 – 160 degrees Fahrenheit (37 – 71 Celsius).
4. Set cashbox(es) in the ultrasonic cleaner with handle arrow up.
5. Ensure cashbox(es) are submerged.
6. Turn on ultrasonic cleaner.
7. Let ultrasonic cleaner run for 4 minutes minimum.
8. Remove cashbox(es) from ultrasonic cleaner.
9. Rinse cashbox(es) thoroughly with clean water to remove solution and leftover debris.
10. Blow out cashbox(es) with compressed air until all fluid is removed.
11. Allow cashbox(es) to air dry for 24 hours in a well-ventilated area.
12. Reinstall the lock(s).
13. MEI suggests a label (with the current date) to track completed cashbox(es).
14. The cashbox(es) are ready for use.

Option B Commercial Dishwasher

Steps:

1. Remove the lock(s) from the cashbox(es).
2. Open cashbox door(s).
3. Remove the spring and yellow plate.
4. Pull pusher plate to maximum extension position.
5. Install 8” tie wrap in the guide path (see Figure 1).
6. Ensure water temperature is 100 – 160 degrees Fahrenheit (37 – 71 Celsius).
7. Ensure dishwasher is set to **NO HEAT DRY.**
8. Use dishwasher soap that is non-toxic and free of chlorine and phosphorus.
9. Set the cashbox(es) on bottom tray with the door open and handle arrow pointing up.
10. Turn on dishwasher.
11. Allow the dishwasher to run a complete cycle.
12. Remove tie wrap with diagonal pliers.
13. Blow out cashbox(es) with compressed air until fluid is removed.
14. Allow cashbox to air dry for 24 hours in well-ventilated area.
15. Reinstall the spring and yellow plate; ensure the bottom of the spring is re-attached.
16. Reinstall the lock(s).
17. MEI suggests a label (with the current date) to track a completed cashbox.
18. The cashbox(es) are ready for use.

Figure 1



Optional Tools and Accessories:

1. Compressed air source or caned air
2. Lock removal tools
3. 8” tie wraps
4. Non-toxic and free of chlorine and phosphorous dishwasher soap
5. Label materials
6. Diagonal pliers

Please contact your MEI sales associate or technical service contact for additional information about this issue or any other related to MEI products.