



Cashflow SC6602/8302

SPARE PARTS GUIDE (Level 1)



©Mars Inc. 2004 Printed in USA.

MEI is a trademark of Mars, Inc. Information is subject to change without notice. MEI has made every effort to ensure that the information in this document is accurate. However, we cannot be held responsible for any errors or omissions.

Version: November 2005

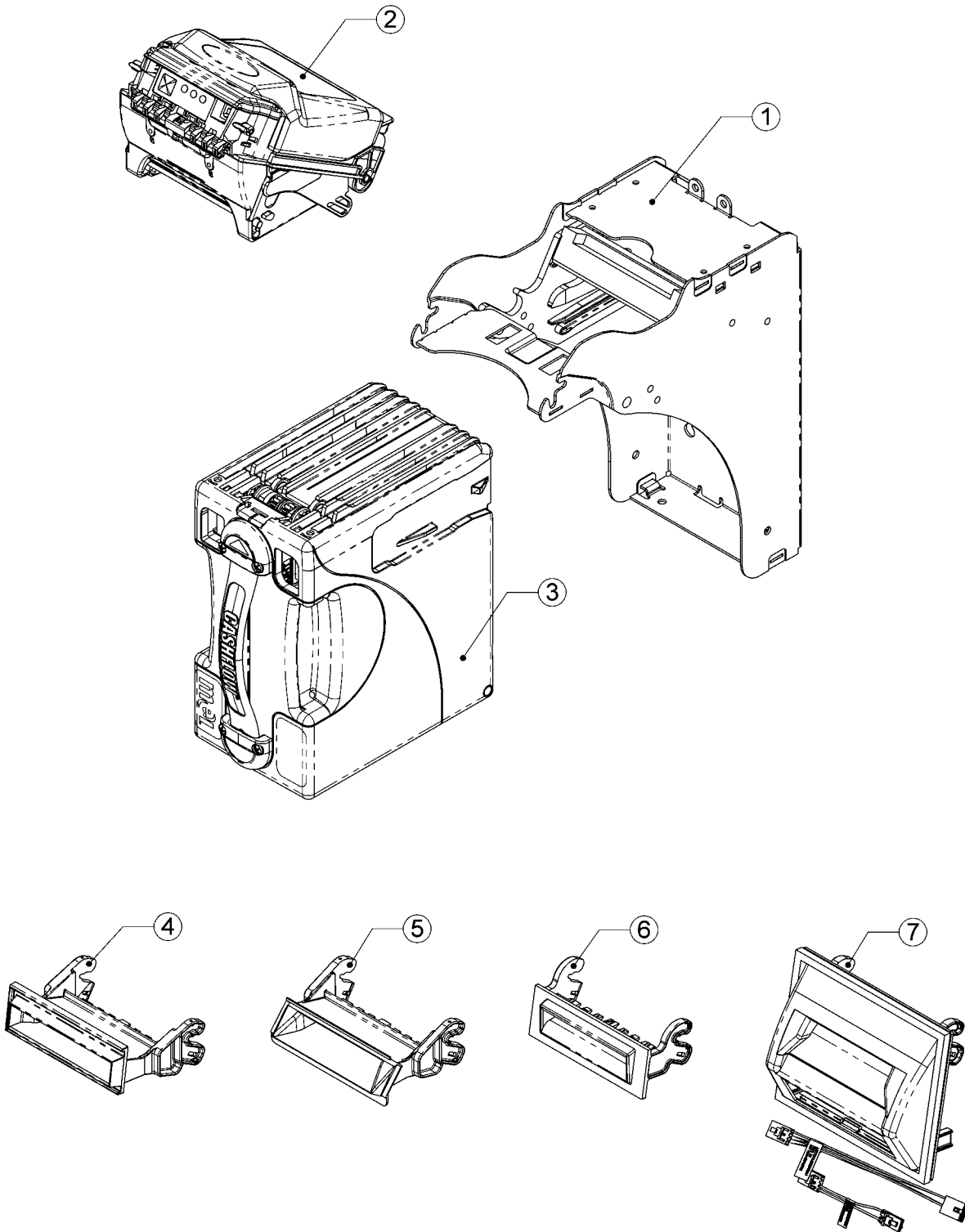
TABLE OF CONTENTS

Main Components.....	Page 3, 4
Acceptor Assembly.....	Page 5, 6
Upper Acceptor Assembly....	Page 7, 8
Lower Acceptor Assembly.....	Page 9, 10
Cashbox Assembly.....	Page 11, 12
Chassis Assembly.....	Page 13, 14
IGT Specific Control board & Connector.....	Page 15, 16
IGT 67mm LXS Bill Entry Guide.....	Page 17, 18

Main Components

Ref Num	Description	IGT Part Number	Part Number
1	Chassis		252018094P1
2	Acceptor Module SC66 GEN 1 SC66 GEN.2 SC83		62542690P1 252014091P1 252011001P1
3	Cashbox Qty 12	50043690	50043690P12
4	IGT S2000 67mm BEG (Qty 30) IGT S2000 83mm BEG (Qty 30)	58144290 58144291	58144290P30 58144291P30
5	IGT 17" Video 67mm EG (Qty30) IGT 17" Video 83mm BEG (Qty30)	58144390 58144391	58144390P30 58144391P30
6	IGT Bartop 67mm BEG (Qty30) IGT Bartop 83mm BEG (Qty30)	58144590	58144590P30 58144591P30
7	IGT LXS 67mm BEG (Qty15) IGT LXS 83mm BEG (Qty15)	58144600	58144600P15 58144601P15

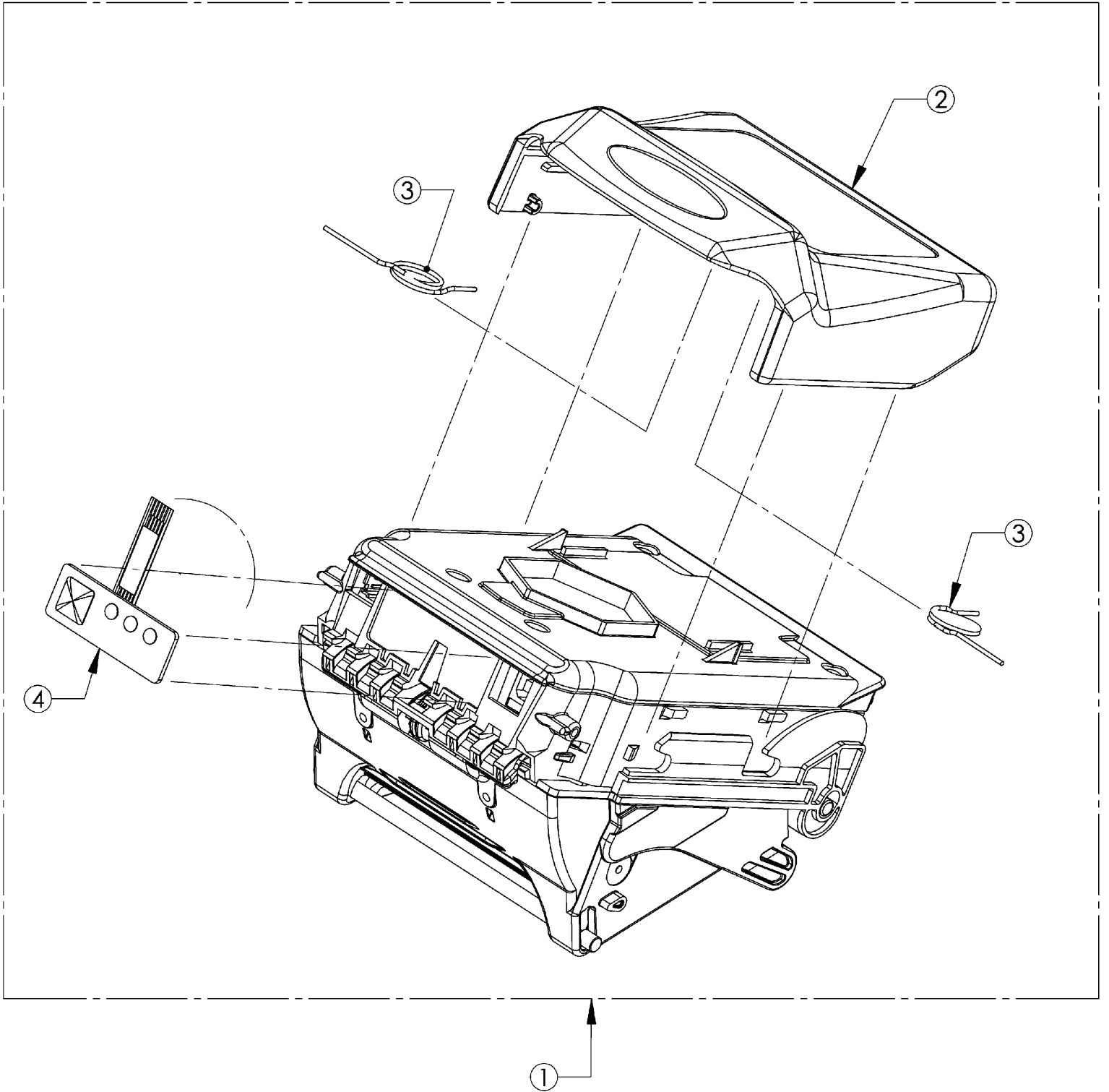
Main Components



Acceptor Assembly

Ref Num	Description	IGT Part number	Part Number
1	Acceptor Module		See pg. 3
	Yellow Latch Cover Assembly (bulk10) <ul style="list-style-type: none"> • Yellow Latch Cover • Springs • Label 		252011040P
2	Yellow Latch Cover- No label or springs (bulk 10)		252020101P
3	Springs, Acceptor Latch (bulk 100)		252043035P
4	MMI Switch (bulk5)		252086004P
n/s	Label, latch cover (bulk50)		252054014P
n/s	Prom Blank, bulk 32		252060060P

Acceptor Assembly

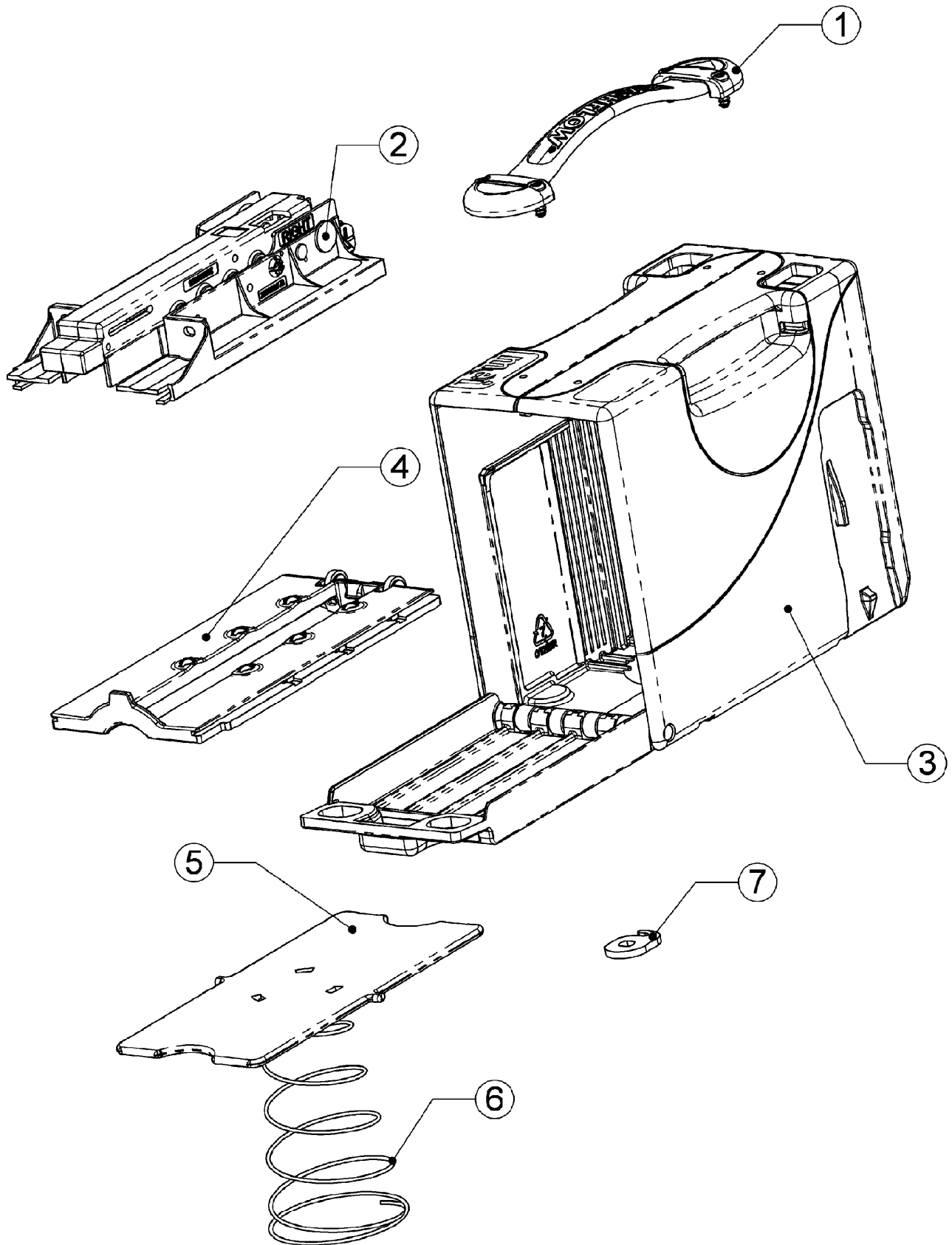


Cashbox Assembly

Ref Num	Description	IGT Part Number	Part Number
1	Cashbox Handle Kit		252062003P
2	Stacker Base Assy.		252063077
3	Side & Door Assembly of Cashbox		252015004P
4	Aperture Plate Assembly (bulk 5)		252011006P
5	Pressure Plate (bulk 20)		252021038P
6	Conical Spring (bulk15)		252035063P
7	Hasp (bulk50)		252035002P
NS	Stacker Pusher Plate		252020042
NS	Stacker Base Assy. Nip Roller (bulk 50)		252029039

NS = Not shown

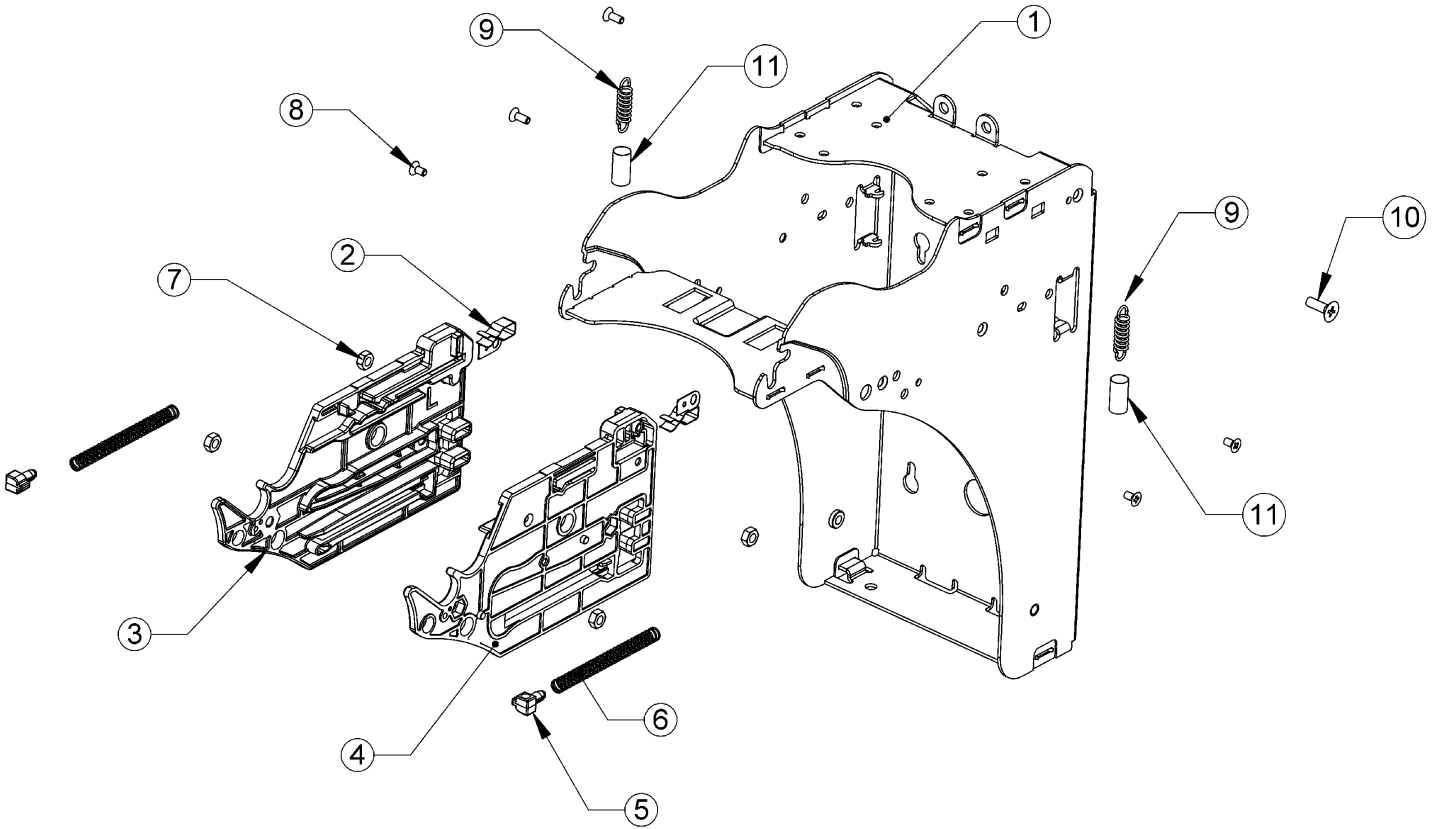
Cashbox Assembly



Chassis Assembly

Ref Num	Description	IGT Part Number	Part Number
1	Assy. Chassis Gen. 2		252018094P1
2	Clip, Earthing Left (bulk100)		252031065
3	Rail Left (bulk 25)		252023250P
4	Rail, Right (bulk25)		252028249P
5	Guide, Spring (bulk 100)		252021099P
6	Spring, Cassette Reject (bulk100)		252045012P
7	Hex Nut, Style1, M4X0.7 (bulk100)		252041019P
8	Screw, 4-20X6L, FH, Pozi (bulk100)		252046020P
9	Spring, Chassis Ext (bulk 100)		252040040P
10	Screw, 4-20X13L, FH, Pozi (bulk 100)		252043030P
11	Sleeve, Cassette Latch (bulk 50)		252024268P

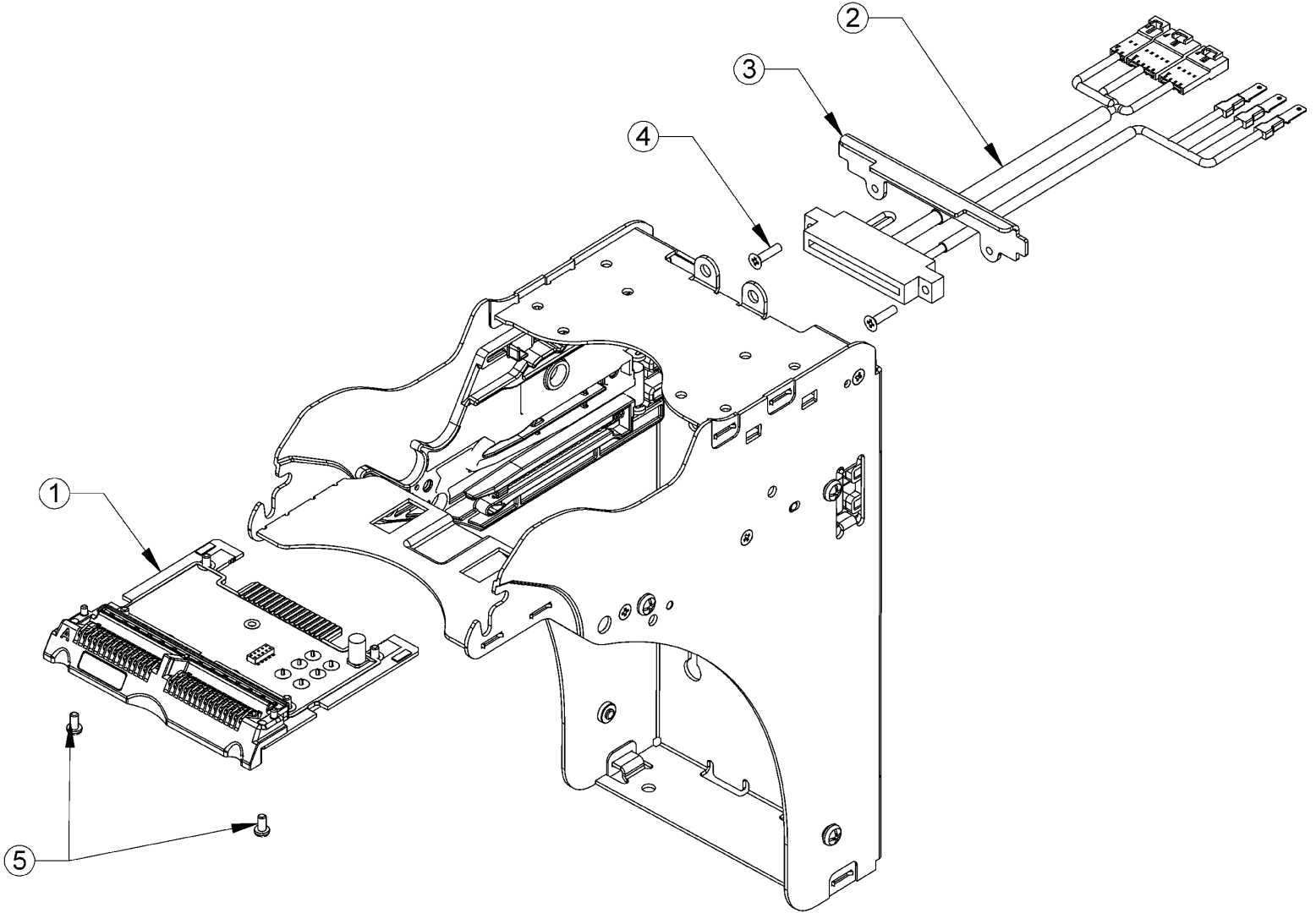
Chassis Assembly



IGT Specific Interface Board & Connector

Ref	Description	IGT Part Number	Part Number
1	Gen. 2 IGT Specific Interface Board SC66/8302 <ul style="list-style-type: none"> • Choke 40 ohms (bulk 50) – Component • Crystal, 11.0592 MHZ (bulk 50 – Component) • Cassette present switch (bulk 50) 		252021089P1 214662004P 201781003P 214791027P
2	IGT Unit Interface Jumper Harness –black – (bulk 5) IGT Interface harness w/ SDS + Ext Inhibit (bulk 10) <ul style="list-style-type: none"> • SDS Serial Output Harness (bulk 10) 		252074017P 60032590 252067070
3	Mounting Plate, edge card connector (bulk25)		252030030P
4	Screws (pak100)		252041031P
5	Screws, control board (bulk100)		252041036P

IGT Interface Control Board & Connector



IGT 67mm LXS Bill Entry Guide

Ref Num	Description	IGT Part Number	Part Number
1	BEG, IGT LXS Slant Top		See Pg. 3
2	Gasket Die Cut (bulk 5)		252029296P
3	Cable, acceptor to LXS BEG (bulk 5)		252076016P
4	Jumper, LXS Machine to SC66 (bulk 5)		251073034P

IGT 67mm LXS Bill Entry Guide

