



## **Series 2000 Audit and Calibration Users Guide**

This software tool has been designed to allow operators to calibrate and audit the Series 2000 bill acceptors. The following sections will explain how to use this software and describe the functions.

### **Items Included in the Kit:**

- Software part number 281321100 (1 CD-ROM)
- Series 2000 MDB/BDS (Gen1 / Gen 2) Harness part number 250072034 (Quantity 1)
- Calibration Paper part number 111513417P (Quantity 10)
- Users Guide part number 250057204

### **System Requirements and Install Instructions:**

#### **Windows 95 / 98 or higher**

- 1) **Insert CD-ROM into the computer**
- 2) **Wait for the installation program to start automatically. If it does not start automatically, run setup.exe program in the disk 1 directory of the CD-ROM**

#### **Windows 3.1**

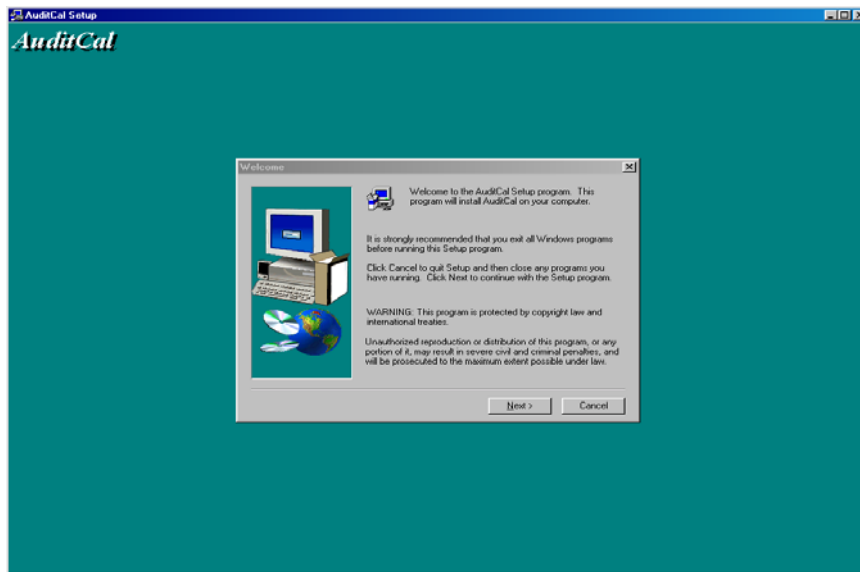
- 1) **Insert the CD-ROM into the computer.**
- 2) **Run setup.exe program in disk 1 directory of CD-ROM.**

2008©MEI Inc. All Rights Reserved.

The MEI device, MEI CASHFLOW, MEI EASITRAX and SODECO are registered trademarks of MEI in the U.S. and other countries. Information is subject to change without notice. MEI has made every effort to assure that the information in this document is accurate. However, we cannot be held responsible for any errors or omissions.

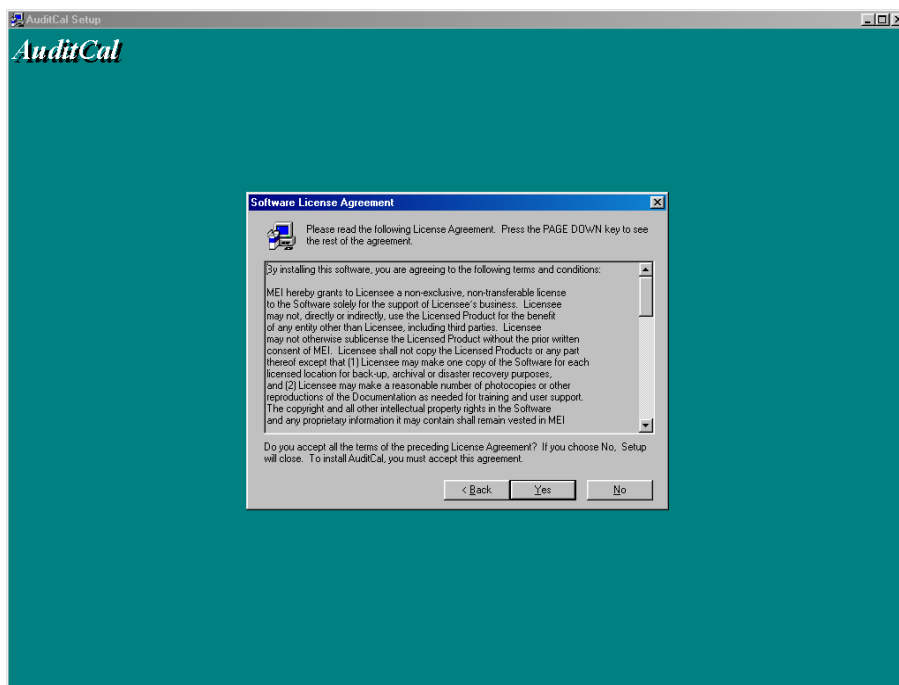
Upon installing disk 1, the “Welcome Screen” will appear. Click the “Next” button to continue. (See Figure 1)

Fig 1



The next screen is a “License Agreement Screen.” Click “Yes” on this screen to install the AuditCal software. (See Figure 2)

Fig 2



The next screen is “Choose Destination Location. Click “next.” See Fig 3 and Fig 4 below.

Fig 3

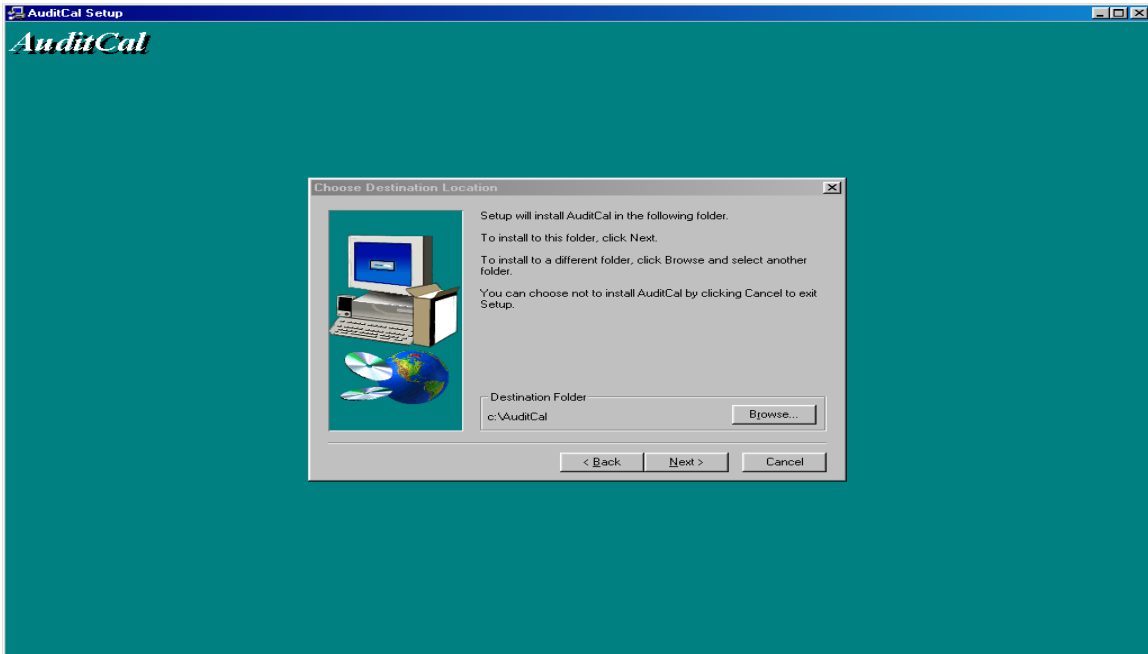
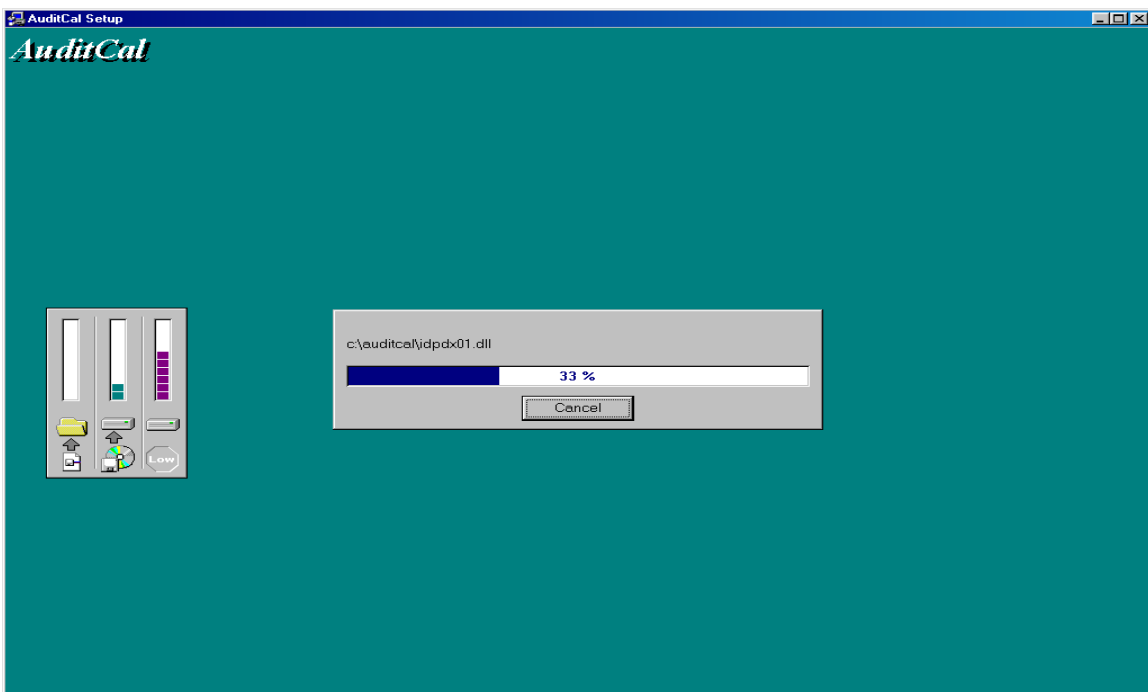
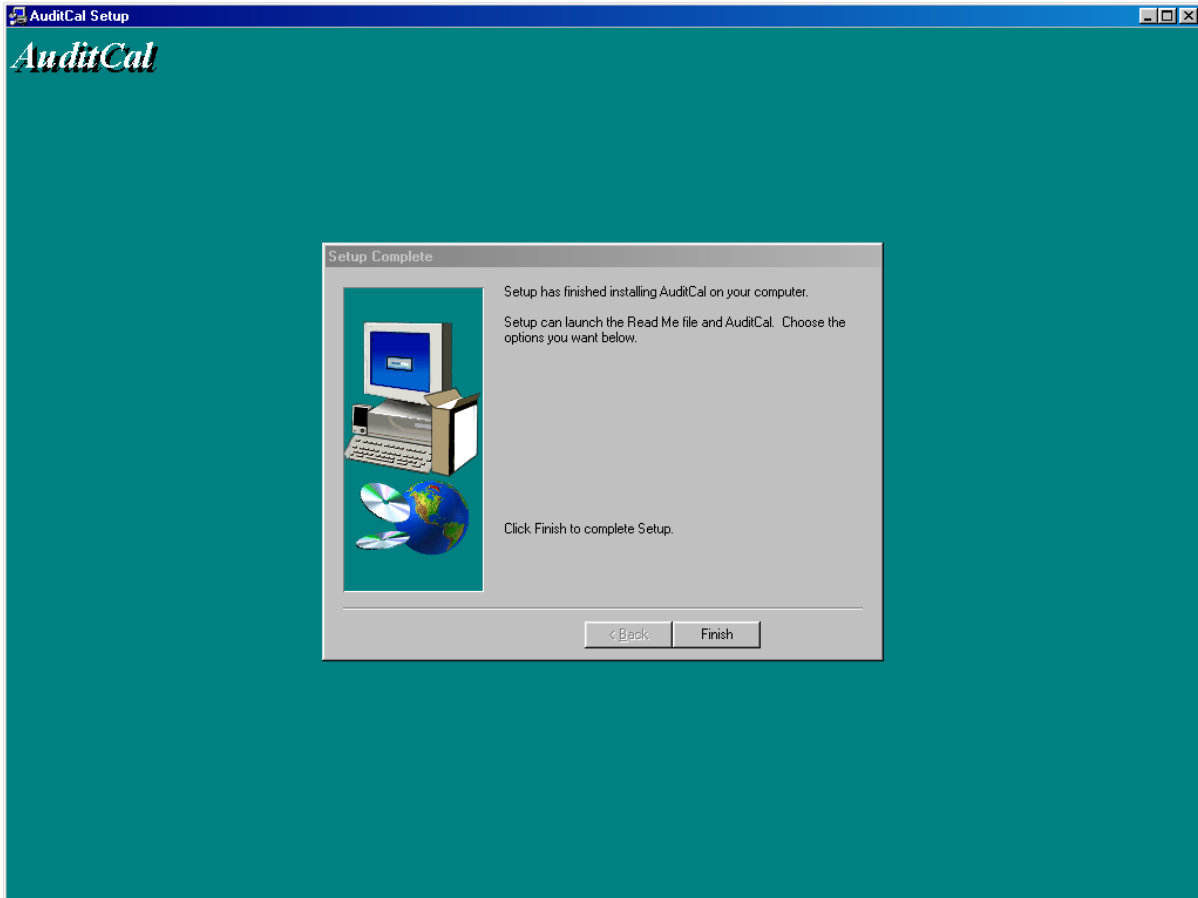


Fig.4



When the setup is complete, click “Finish.” See Fig.5 below.

Fig.5





# 1.0 Connecting the Interface Harness

Use the enclosed Series 2000 MDB/BDS Harness to establish communications between your computer and the Series 2000 bill acceptor. Begin by plugging the P3 connector (refer to drawing below) into the serial port on your computer, and connect the 30-pin connector to the bill acceptor.

**Note: There are two 30-pin connectors; one for 24-volt units labeled P6 and one for 115-volt units labeled P1.**

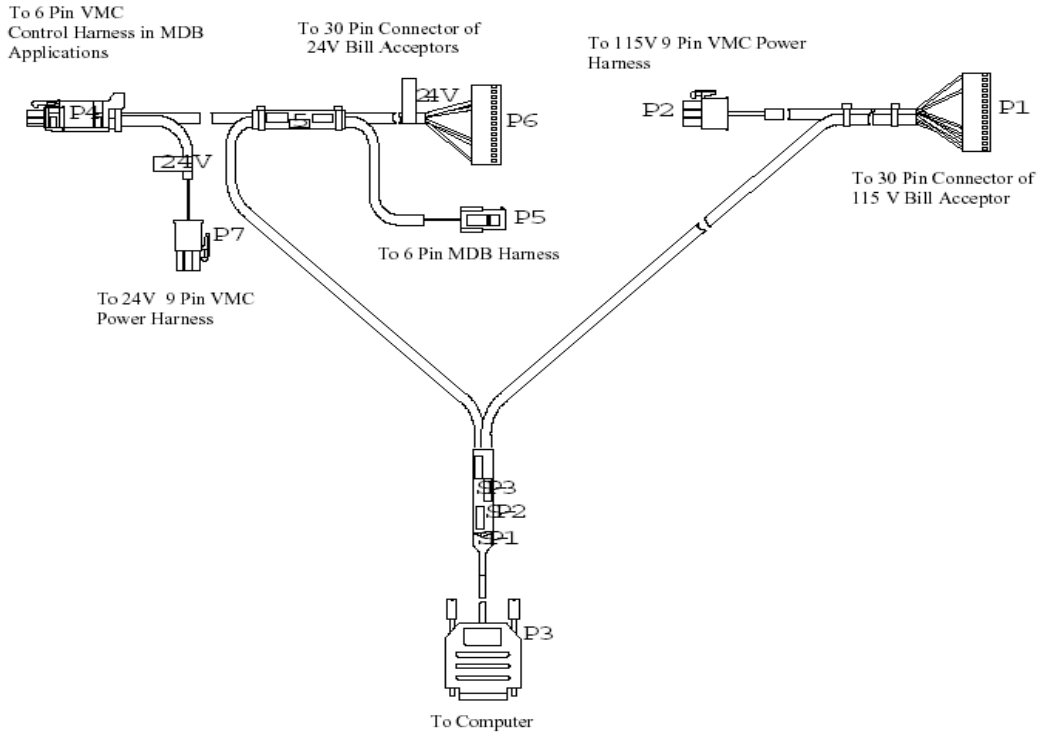
Below is a chart explaining which power connector to use:

Power Connections	Vending Machine	Tester
24 VAC	P-7	P-4
24 V MDB	P-4	P-4
115 VAC	P-2	P-2

<u>Accessories</u>
P-4 MDB Extension Harness- P/N 250071026
P-2 Gaming Interface Harness- P/N 01-12-139

**Note: If you are testing the 115V bill acceptor on the bench, use the gaming interface harness to establish power at the P2 connector.**

## 1.0 Bill Acceptor Connections (Series 2000)





## Summary

The Read Rec button allows you to display previously saved audit files. When you click this button, a file selection dialog appears. You can select multiple files by holding down the shift or control key and clicking on the files. Selected files get added into the combo box directly below the clear and remove buttons. You can use the combo box to click down one file at a time or use the scroll bar to view audit file. The Clear box clears the list of files in the combo box. The Remove box allows you to remove files one at a time from the list. You can use this feature to exclude files from the summary when you use the summary feature.

After auditing a bill acceptor, you can use the Write Rec button to save the audit information into a file. **Note:** Separate the audit files according to Model Numbers of the Bill acceptors to be able to use the summary feature. It is recommended that you save your files under AuditandCal/support/audit. To keep it simplified, file them as AE2600, AE2800, Gen1VN25AE24, and GEN2VN25AE24. You could create other directories and organize them, as you desire. If you have audit files saved from different types of validators saved into the same folder and you try to summarize the audit information, you will get an Audit file type mismatch error message. If you get this message you can fix this problem by removing that file from that directory to the appropriate folder. The Key S# allows you to enter a serial number and to look at the audit files from a particular bill acceptor. To use this feature, enter the desired serial number to this box and press Read Rec button and select the audit file. When you press the summary button, the “Audit & Cal Tool” will summarize the audit files for this validator. The Key Date is to enter and read audit data from a given date to now: The date must be entered in this format: Example 08/19/02. When you press the Summary button, “Audit & Cal Tool” will summarize all the audit files in the combo box from this date to present. Similarly, you can enter a serial number and key date and summarize audit results for a specific validator from a given date to present.

# 4.0 Audit Data

# of Bills Escrowed  
 # of Bills Rejected  
 # of Bills Accepted

Selection of the Com Port

Identification # of Bill Acceptor

Serial # of Bill Acceptor

# of Bills Accepted by Denomination

# of Bills Stacked by Denomination

# of Bills Rejected by Denomination

Vending Machine Controller Returns

Bills Returned for Other Reasons

Combination of Misc. and Disabled Returns

Acceptance Rate by Denomination

# of Accepted Bills  
 divided by  
 # of Escrowed Bills

# of Stacked Bills  
 divided by  
 # of Accepted Bills

This section is for adding any comments you have pertaining to the bill acceptor data.

**Acceptance Results**

	\$1	\$2	\$5	\$10	\$20
Accepted	268	21	37	2	2
Stacked	199	20	29	1	2
Disabled Ret	0	0	0	0	0
VMC/Mech Ret	21	1	6	1	0
Misc Return	38	0	0	0	0
Total Return	59	1	6	1	0
Acceptance	87.5 %	100 %	100 %	100 %	100 %

Acceptance Rate: 89.67% [330 / 368]  
 Stack Rate: 64.85% [251 / 387]  
 Comment:

## 4.0 Audit Data

Closes Communication to Bill Acceptor

Exports a comma separated text file of the Audit information.

Downloads New Software into the Bill Acceptor

Opens Communications

Calibrate a Bill Acceptor

Print a Record

**Acceptance Results**

	\$1	\$2	\$5	\$10	\$20
Accepted	268	21	37	2	2
Stacked	199	20	29	1	2
Disabled Ret	0	0	0	0	0
VMC/Mech Ret	21	1	6	1	0
Misc Return	38	0	0	0	0
Total Return	59	1	6	1	0
Acceptance	87.5 %	100 %	100 %	100 %	100 %

Acceptance Rate: 89.67% [330 / 368]  
 Stack Rate: 64.85% [251 / 387]  
 Comment :

Enabled Bills (x): \$1 \$2 \$5 \$10 \$20 \$50 \$100 Tkn

High Security (x): \$1 \$2 \$5 \$10 \$20 \$50 \$100 Tkn

Dip Switches (x): 1 2 3 4 5 6 7 8

Pulses : 1  
 Pulse Pattern : Short Pulse  
 Direction : DU/SU/DD/SD  
 Interface : Vending  
 Credit Line : Use Harness

Allows the audit information to be saved in a file.

Note: Separate the audit files according to bill acceptor model numbers. To enable the use of the summary feature, save the files under: audit/cal/support/audit. Create File Folders such as AE2600, AE2800, VN25/AE24 GEN I, and VN25/AE24 Gen II.

“Remove” allows for the removal of individual files from the list.

Combo Box - Files that are currently selected for viewing

## 4.0 Audit Data

Acceptance Results

	\$1	\$2	\$5	\$10	\$20
Accepted	268	21	37	2	2
Stacked	199	20	29	1	2
Disabled Ret	0	0	0	0	0
VMC/Mech Ret	21	1	6	1	0
Misc Return	38	0	0	0	0
Total Return	59	1	6	1	0
Acceptance	87.5 %	100 %	100 %	100 %	100 %

Acceptance Rate: 89.67% [330 / 368]  
Stack Rate: 64.85% [251 / 387]  
Comment:

Enabled Bills (x) High Security (x) Dip Switches (x)

Pulses : 1 Direction : DU/SU/DD/SD Credit Line : Use Harness  
Pulse Pattern : Short Pulse Interface : Vending

Cash value of bills accepted by the bill acceptor

# of Inserted Bills  
divided by  
# of Stacked Bills

Read Rec box- allows you to display previously saved audit files. You can select multiple files by holding down the shift key and clicking on the files. Selected files get added into the combo box

The clear box clears the list of files in the combo box

Slider- Lets you scroll through the individual files in the combo box.  
Enter a serial number to look up and summarize audit files for a particular bill acceptor.

Enter a date and look up and summarize audit files for a particular bill acceptor.

This will summarise all the audit files in the combo box from the Key Date to present. Note: You can enter a serial number (S#) and Key Date and summarize audit results for a specific bill acceptor.

# 4.0 Audit Data

Audit and Calibration Tool, P/N 281321100, Version 1.00

Communication is Open

Port:  Com1  Com2

Product ID: 3CV1300111302P04  
Product SN: 023281322191

Escrowed: 387  
Rejected: 57  
Accepted: 330

Date/Time: 05/21/03 at 11:11:46 AM  
Cash Counter: 434  
QP Ratio: 1.82

File Access: Read Rec, Write Rec, Clear, Remove, Validator

	\$1	\$2	\$5	\$10	\$20
Accepted	268	21	37	2	2
Stacked	199	20	29	1	2
Disabled Ret	0	0	0	0	0
VMC/Mech Ret	21	1	6	1	0
Misc Return	38	0	0	0	0
Total Return	59	1	6	1	0
Acceptance	87.5 %	100 %	100 %	100 %	100 %

Acceptance Rate: 89.67% [330 / 368]  
Stack Rate: 64.85% [251 / 387]  
Comment:

Key S#:   
Key Date:   
Summary

Enabled Bills (x): \$1 \$2 \$5 \$10 \$20 \$50 \$100 Tkn

High Security (x): \$1 \$2 \$5 \$10 \$20 \$50 \$100 Tkn

Dip Switches (x): 1 2 3 4 5 6 7 8

Pulses: 1  
Pulse Pattern: Short Pulse

Direction: DU/SU/DD/SD  
Interface: Vending

Credit Line: Use Harness

Identifies which bills are enabled  
Check mark means Enabled  
Blank means Disabled

# of Pulses per dollar  
Identifies Pulse Type

# of bill directions (1, 2, or 4 way bill acceptance)

What interface the Bill Acceptor is in.

Which Bills are in High Security or High Acceptance.  
Check mark means High Security.  
Blank means High Acceptance.

Identifies which option switches are ON.  
Check mark means ON.  
Blank means OFF.

Credit line - Interface used by some types of machines in vending