

ASSEMBLY INSTRUCTIONS

Convert MEI CF95xx Unit from Front-entry to Top-entry

MATERIAL REQUIRED

You will need to order the “CF9500 1 PIN TOP ENTRY + HOOK” kit, part #729281005, to convert a Front-entry CF95xx to Top-entry.

The kit contains the following parts:

Component Number	Component Description
728513001	CF9500 HOOKED COIN CUP LID
33-11-3350	COIN CUP ADAPTOR RELIEVED 1PIN
49-04-0192	REJECT LEVER SPRING
710586002	HIGH LIFT REJ/LEVER - YELLOW



ASSEMBLY INSTRUCTIONS

1. Assemble the top-entry component with the following parts: #33-11-3350, #49-04-0192, and #710586002.

- 1.1 Put the reject lever spring (part #49-04-0192) on the back side of the yellow reject lever (part# 710586002) as shown in PIC 1. Push the end of the spring, so that the spring lays flush with plastic as in PIC 2.

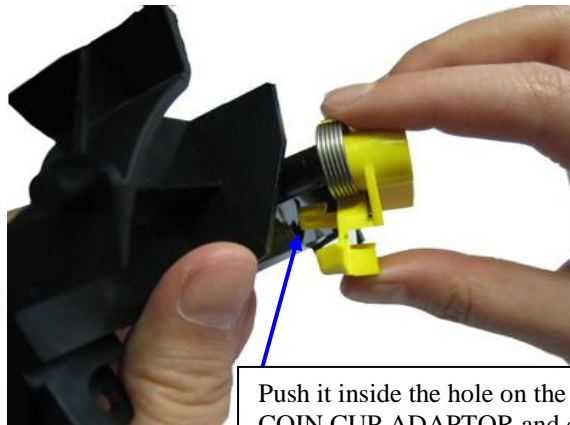


PIC 1



PIC 2

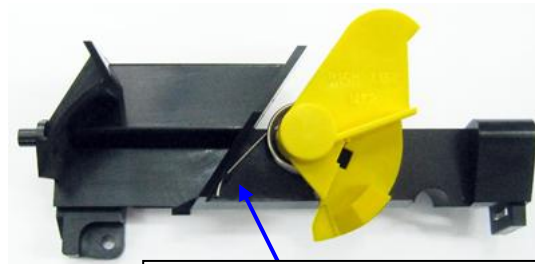
- 1.2 Place the yellow reject lever from the previous step (1.1) over the pin on the coin cup adapter (part #33-11-3350).



- 1.3 Turn the end of the reject lever spring, as shown in PIC 3 below. The end of the spring should be put into the slot on the coin cup adapter, which prevents the spring from popping out. Press on the top of yellow reject lever to check the spring effect.



PIC 3

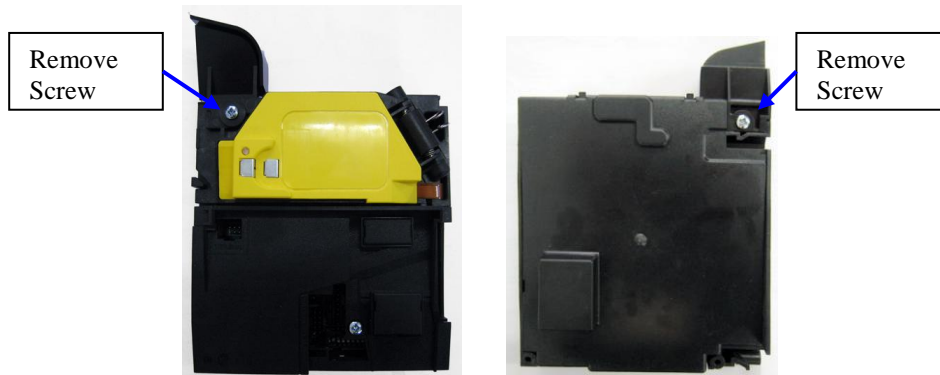


Position the spring in the slot

You have now assembled the top-entry component that will replace the front-entry component already installed on the CF9500 unit.

2. Convert the front-entry unit to top-entry

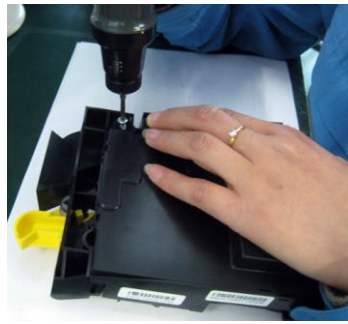
2.1 Take the CF9500 front-entry unit, remove the front-entry components by unscrewing 2 screws as shown in below pictures.



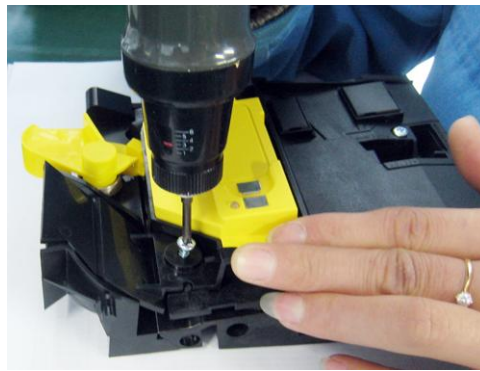
The following are the parts you should have removed:



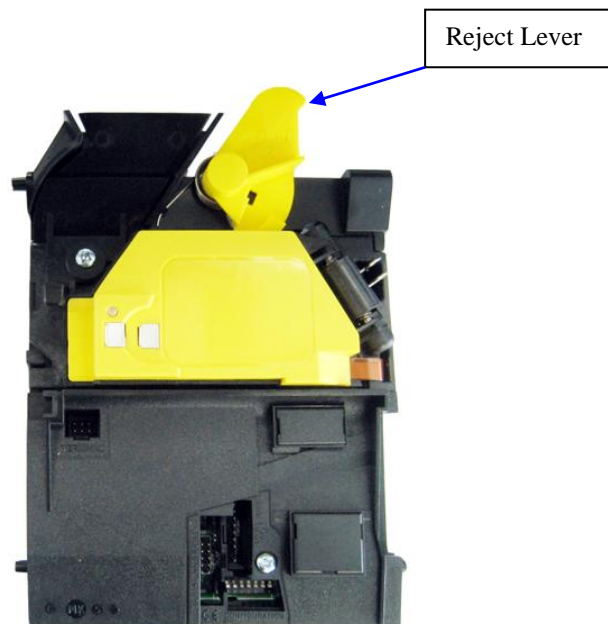
2.2 Place the top-entry component on the top of the unit. Align the top-entry component and the CF9500 unit so that the location pin on the right side of unit is inside the hole on the top-entry component. Then, secure the top-entry component by 1 screw on the back side of unit. (Screw is No.6 x 5/16 PLASTITE SCREW) (*Suggestion:* Use a regular screw driver to screw in the screw $\frac{3}{4}$ of the way. Then, finish it with an electric screwdriver – torque $<1.4\text{N.m}$. This will avoid stripping the plastic thread of the unit.)



2.3 Next, turn the unit over to the front side and with 1 screw, secure the CF9500 hooked coin cup lid, part #728513001, to the unit, as shown in the picture below.



2.4 Push the yellow reject lever, to see if the product opens and closes freely.



Top entry CF95xx unit